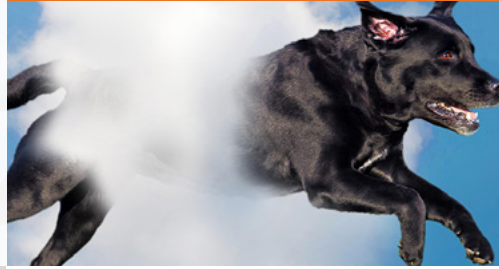


AT-A-GLANCE



CLOUD WI-FI IS COMPRISED OF:

- An all-inclusive subscription package
- A large selection of compatible access points (APs)

CHOOSE FROM THE FOLLOWING SUBSCRIPTION OPTIONS:

- 1-year
- 3-year
- 5-year

CLOUD WI-FI SUBSCRIPTION INCLUDES:

- AP management
- Reporting and analytics
- 24x7 phone / chat / web support

CLOUD SIMPLICITY MEETS BETTER WI-FI

Cloud Wi-Fi simplifies the complexity of deploying and managing a WLAN without sacrificing the great Wi-Fi experience that users demand and that IT is expected to provide.

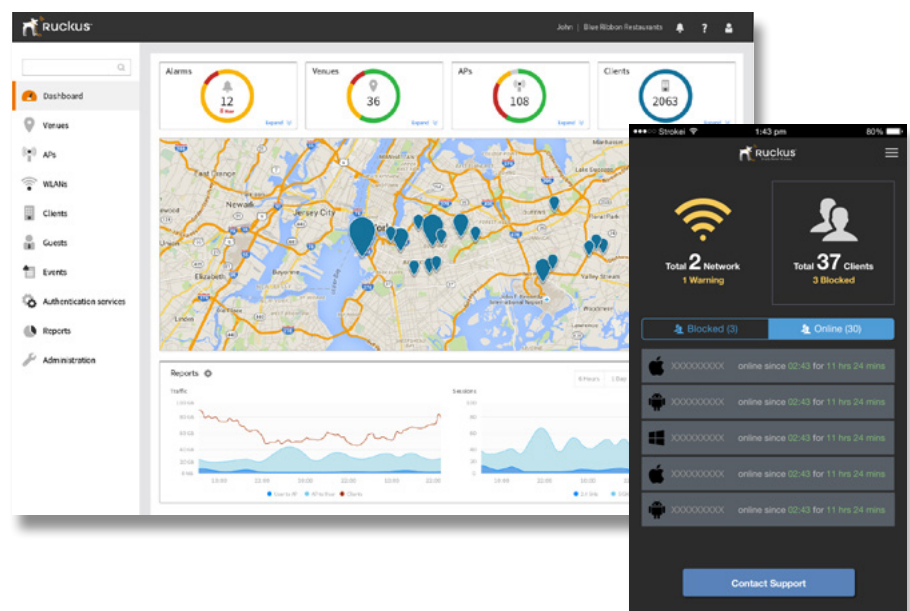
Effectively managing and troubleshooting an on-premise controller-based Wi-Fi network requires dedicated staff and network expertise. The challenge becomes more acute with a multi-site network. Cloud Wi-Fi makes it possible for lightly staffed (or just plain overworked) IT organizations to face a multi-site challenge with confidence.

Users only care about how good the Wi-Fi is, though. Cloud Wi-Fi is the first cloud-managed Wi-Fi that actually delivers a service that users love. Goodbye complaints, hello accolades.

SIMPLE MEANS SIMPLE, AT YOUR DESK OR ON THE GO

With a modern, intent-driven user interface, managing your WLANs couldn't be more intuitive. A configurable dashboard puts the most important information front-and-center, so you can respond quickly when issues arise.

An equally intuitive mobile app allows network admins to configure and monitor the network from any iOS or Android device. Event alerts mean less time wasted scanning for problems.



DESIGNED TO SCALE, AND SCALE SOME MORE

Built on an industrial-strength public cloud architecture (the Ruckus Cloud), Cloud Wi-Fi can manage ten-thousand APs as easily as it manages ten, all from a single UI. No matter how large or dispersed your organization grows, one UI is all you'll ever need.

EXPERIENCE GUEST MANAGEMENT NIRVANA

When high-profile guests struggle to access your network or can't access it at all, it's bad news for everyone. Cloud Wi-Fi turns guest access into an asset, making visitors' first experience with your organization a great experience. The best part: there's no extra effort required from IT. You can set up a new guest WLAN in seconds—from the console or from the mobile app. And you don't even need to hand out passwords: guests can bring their own social login credentials.

BETTER WI-FI, REALLY

Any vendor can provide coverage that works reasonably well some of the time. But for your users, some of the time isn't good enough. And today's environment is getting tougher: users are carrying more devices, streaming video for hours and generally stressing the network.

You need a Wi-Fi network that can manage that stress—and manage it everywhere, not just where and when it's easy.






For a decade, Ruckus has built the highest capacity, most interference resistant, most penetrating Wi-Fi infrastructure in the world for deployment indoors and out. That's what you get with Cloud Wi-Fi. Your users are going to feel the difference.

COMES WITH A BUILT-IN INSURANCE POLICY

Life is unpredictable. Management changes. Policies change. Websites get hacked. Customer databases are breached. For these or other reasons, it's possible that at some point in the future, you may decide to bring any number of cloud-managed services in-house, including your cloud-managed Wi-Fi. If that day comes, every AP you've deployed with Cloud Wi-Fi can be reused with any other Ruckus controller option. How's that for investment protection?

WHAT'S NEXT?

[Sign up](#) for a free Cloud Wi-Fi trial.

ZoneFlex R310	ZoneFlex R500	ZoneFlex R600	ZoneFlex R710	ZoneFlex T300 Series
				
Indoor	Indoor	Indoor	Indoor	Outdoor
802.11ac, 2x2:2	802.11ac, 2x2:2	802.11ac, 3x3:3	802.11ac Wave 2, 4x4:4	802.11ac, 2x2:2
	Dual-polarized antennas	Dual-polarized antennas	Dual-polarized antennas	Dual-polarized antennas